

## Community Newsletter No.5



June 2008

### Background

The Moolarben coal exploration area is located approximately 40 kilometres north-east of the Mudgee township and immediately east of the village of Ulan.

On 6 September 2007, the Minister for Planning made a determination to approve Stage 1 of the Moolarben Coal Project subject to stringent conditions. These conditions are available on the MCM website at [www.moolarbencoal.com.au](http://www.moolarbencoal.com.au).

### Community Consultative Committee

The Approval of Stage 1 contained conditions requiring the establishment of a newly appointed Community Consultative Committee (CCC) for the construction and operation of the Moolarben Coal Project. Its purpose is to keep the community informed on matters discussed at meetings and provide a forum for open discussion between representatives of MCM, the community, Mid-Western Regional Council and other stakeholders. The CCC's scope covers approval conditions relating to the Moolarben Coal Projects' construction and operation, environmental performance and community relations.

The newly appointed committee consists of community representatives along with representatives from Mid Western Regional Council and MCM. The seven community representatives are Mesdames Julie Imrie, Helen Swords, Annette Riley, Victoria Tapp and Messrs Malcolm Swords, Ken Mayberry and David Stokes. Mr Noel O'Brien OAM has been appointed as the independent Chair person of the CCC.

### Environmental Monitoring Program

MCM have continued to undertake baseline environmental monitoring and the conduct of further specialist studies. Air quality and surface waters are monitored on a monthly basis. Groundwater is also being monitored through existing bores, piezometers and test bores. Results of monitoring are presented to landowners on an ongoing basis.

With the granting of approval for the Moolarben Coal Project the environmental monitoring program has been expanded to include specific approval conditions and fulfilment of requirements for statutory licences and permits.

### Environmental Management

MCM are in the process of preparing an Environmental Management Strategy (EMS), Environmental Management Plans (EMP's) and Monitoring Plans (MPs) in consultation with the Department of Planning and other relevant government agencies.

The EMS provides an overall framework for the environmental management of the construction and operation of the Moolarben Coal Project.

EMPs and MPs are being prepared for each of the key environmental areas including noise and vibration, air quality, surface and groundwater, heritage and waste. These EMPs and MPs contain specific objectives and criteria, monitoring procedures, safeguards and ameliorative actions to prevent and/or mitigate potential environmental impacts along with roles and responsibilities and reporting and review procedures. These EMPs and MPs have been prepared to ensure that specific approval conditions and requirements for statutory licences and permits are fulfilled.

The EMS, EMPs and MPs require approval of the Department of Planning before they can be adopted and implemented. The EMS and some EMPs and MPs have been lodged and are currently with the Department of Planning pending approval prior to the commencement of construction of the Moolarben Coal Project. Once the EMS, EMPs and MPs are approved they will be made available on the MCM website.

MCM are also currently in the process of finalising an Environment Protection Licence (EPL) application to the Department of Environment and Climate Change. An EPL licence contains conditions that relate to pollution prevention, monitoring and cleaner production through implementation of best practice.

### Legal Challenges

The Court of Appeal judgement in the Ulan Coal Mine Limited's (UCML) appeal against its unsuccessful Supreme Court challenge to the validity of the Moolarben Coal Mine Pty Limited's mining leases is expected in the coming weeks. The Land & Environment Court challenge by UCML of the project approval has been heard and dismissed.

MCM has sought determination of compensation issues by the Mining Warden. Once this is finalised construction will commence.



## Voluntary Planning Agreement

MCM and the Mid-Western Regional Council have finalised the Voluntary Planning Agreement (VPA) which will be beneficial to all residents of the shire regarding road improvements and community infrastructure.

## Employment Enquires

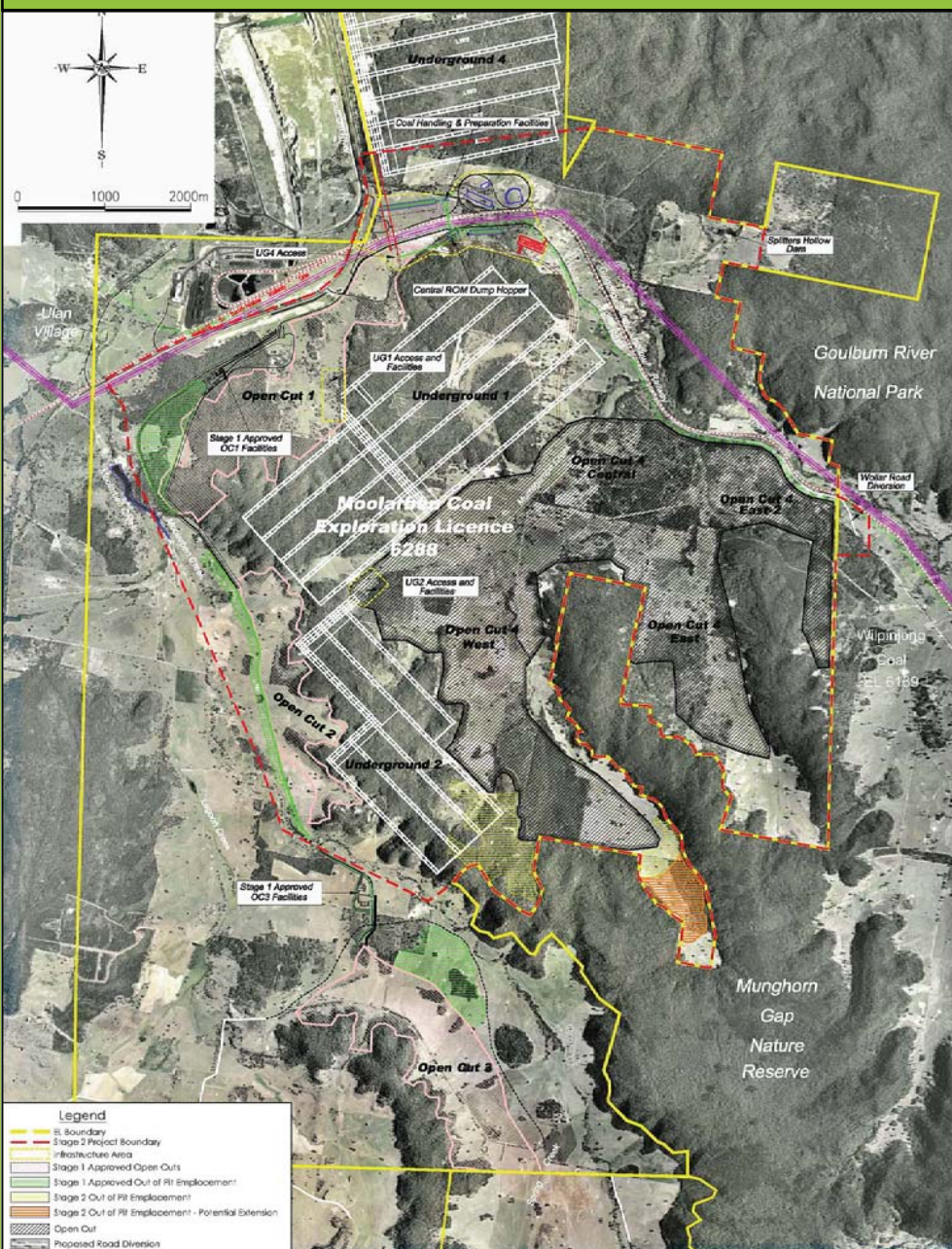
MCM looks forward to working with the local community on the construction and operation of the Moolarben Coal Project. MCM has recently advertised for local businesses interested in the Moolarben Coal Project to submit Expressions of Interest. All enquires should be directed to Natasha Wilkinson via the contact details provided at the end of this newsletter.

## Stage 2 of the Moolarben Coal Project

Our last newsletter reported that exploration drilling over Exploration Lease 6288 identified a further viable coal resource, primarily within the Murrumbidgee Valley. This coal resource forms Stage 2 of the Moolarben Coal Project.

Stage 2 of the Moolarben Coal Project will comprise Open Cut 4 and Undergrounds 1 and 2 with supporting infrastructure.

### Proposed general arrangement of Stage 2 of the Moolarben Coal Project.



Stage 2 of the Moolarben Coal Project will utilise Stage 1 coal handling, preparation and train loading facilities. Stage 2 is located generally east of the approved Stage 1 towards Wilpinjong Coal Mine.

On 1 May 2008 a Major Project Application and Preliminary Environmental Assessment was lodged by MCM with the Department of Planning for Stage 2.

Stage 2 of the MCP will be subject to environmental assessment and public consultation requirements under Part 3A of the Environmental Planning and Assessment Act, 1979. The Environmental Assessment Report and consultation will be undertaken in accordance with the Director General of Planning's Environmental Assessment requirements which are yet to be provided by the Department of Planning.

There are currently a number of environmental studies being undertaken on the Stage 2 area. The assistance of the local landowners to conduct the studies is acknowledged and we thank you for your support.

## Community Information Session

Residents in the Ulan, Cooks Gap, Moolarben and Bobadeen areas and persons interested in the Moolarben Coal Project are invited to attend our fourth Community Information Session to be held at the Ulan Community House in July 2008.

A flyer will be distributed and public notice provided in the Mudgee Guardian notifying the details of the community information session.

## Environmental Enquiry Number

MCM has established an environmental enquiries number in readiness for the commencement of construction. The enquiries number is **1800 556 484**. The purpose of this number is to provide the community with a readily accessible contact to the Moolarben Coal Mine for reporting of complaints or other enquiries.

For further information regarding the Moolarben Coal Project please refer to [www.moolarbencoal.com.au](http://www.moolarbencoal.com.au) or contact:

Environmental Enquiry Number: **1800 556 484**

Ian Callow (Project Manager): 0408 701 977

For employment related enquires please contact:

Natasha Wilkinson

Email: [nwilkinson@frl.com.au](mailto:nwilkinson@frl.com.au)

Fax: (07) 3211 7328

Interested contractors, fabricators, suppliers and business houses should register their interest by logging on to [www.felixresources.com.au](http://www.felixresources.com.au) and then following the Community Awareness and Business Opportunities prompts and enter details under "Moolarben".

Moolarben Coal Mines Pty Limited  
Level 14, 213 Miller Street,  
NORTH SYDNEY NSW 2060