



MOOLARBEN COAL COMPLEX STAGE 1 AND STAGE 2 OPEN CUT OPTIMISATION MODIFICATION

FACT SHEET, MARCH 2017

About Moolarben Coal

The Moolarben Coal Complex is located approximately 40 kilometres north of Mudgee in the Western Coalfields of New South Wales. Moolarben Coal Operations Pty Ltd is the operator of the Moolarben Coal Complex, and is a wholly owned subsidiary of Yancoal Australia Limited.

The approved Moolarben Coal Complex comprises four approved open cut mining areas (OC1 to OC4), three approved underground mining areas (UG1, UG2 and UG4) and other mining related infrastructure (including coal processing and transport facilities).

Mining operations at the Moolarben Coal Complex are approved until 31 December 2038 and are carried out in accordance with Project Approval (05_0117) (Moolarben Coal Project Stage 1) and Project Approval (08_0135) (Moolarben Coal Project Stage 2).

With a combined workforce of over 600 people, including local apprentices and trainees, and through regular engagement of local businesses, suppliers and manufacturers, Moolarben Coal has become a major economic contributor to the Mid-Western region.

Supporting our local community is a key focus at Moolarben Coal. Since operations commenced, Moolarben has distributed over \$980,000 in grants and sponsorships throughout the local community and broader Mid-Western district.

Moolarben's Community Support Program provides funding to assist a range of community-focused initiatives across the Mid-Western Council district and surrounding areas, helping local community groups in the fields of education, environment, health and safety, infrastructure projects, the arts, leisure and research.

More information on Moolarben Coal's existing licences, approvals and Community Support Program is available at www.moolarbencoal.com.au

Proposed Open Cut Optimisation Modification

Moolarben Coal continually strives to improve, and has identified opportunities to optimise its operations. To realise these improvement opportunities Moolarben Coal will be seeking approval from the NSW Department of Planning & Environment to modify its Project Approvals. The proposed Modification will involve:

- Minor extensions to disturbance limits (as shown on Figure 1 overleaf) to facilitate safe and efficient mining
- Refinements to final landforms
- Increased peak open cut coal production, washing and railing
- Site infrastructure refinements, such as haul road locations.

Modification Environmental Assessment

An Environmental Assessment is currently being prepared to support the Modification.

The Environmental Assessment will describe existing environmental baseline data, potential impacts of the Modification when compared to the approved operations, and avoidance, monitoring, rehabilitation and management measures.

The Environmental Assessment will be supported by specialist studies, including for:

- Biodiversity
- Heritage
- Noise
- Air Quality
- Water
- Visual amenity

Timing

Moolarben Coal intends to lodge the Environmental Assessment for the Modification to the NSW Department of Planning & Environment in Quarter 3 2017.

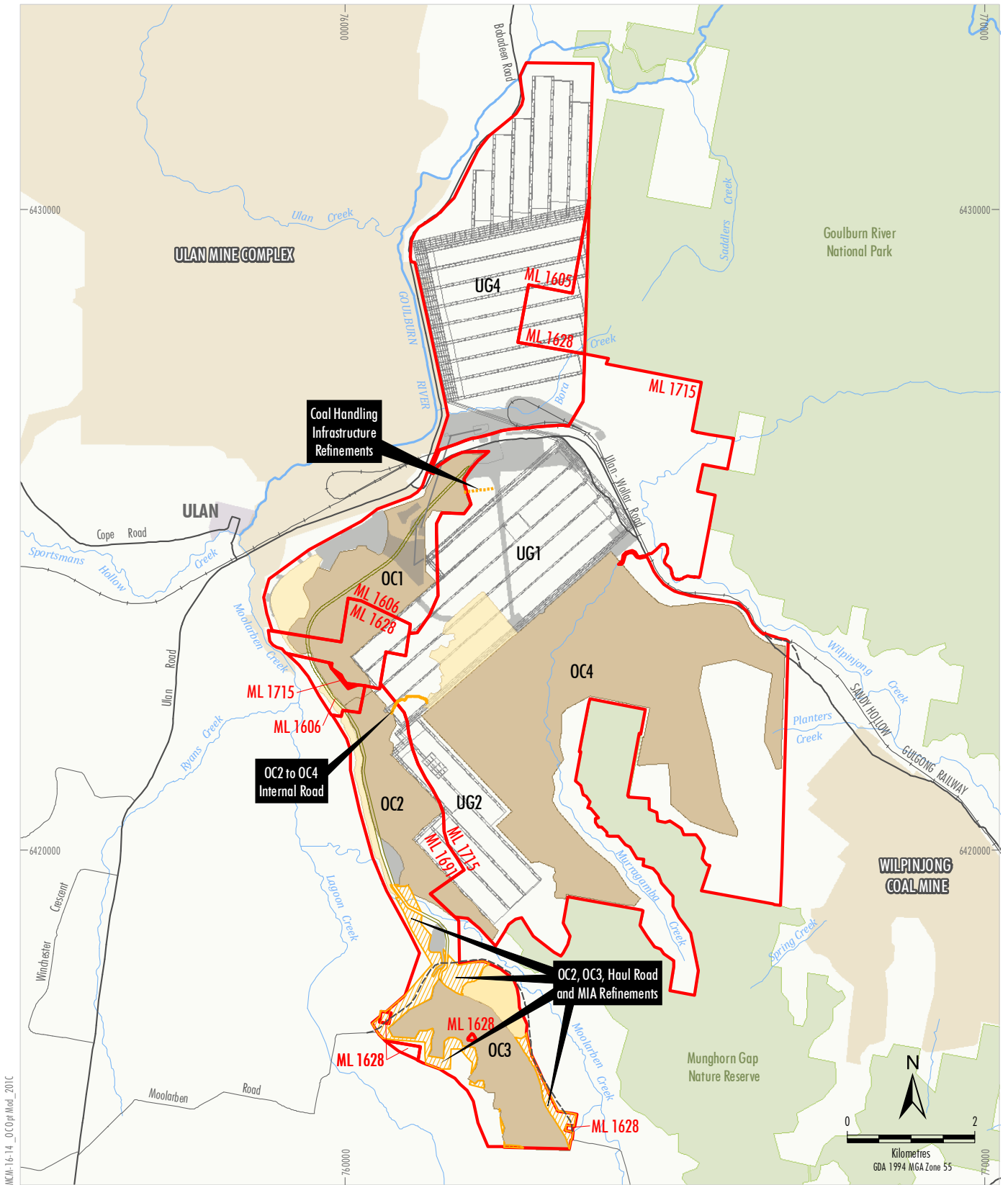
Questions and Contact Details

Full details of the Modification will be available once the environmental studies are completed.

In the meantime, should you have any comments relating to the proposed Modification, please contact us via:

Moolarben.Feedback@yancoal.com.au
Ph: (02) 6376 1500





MCL-16-14_OCOptMod_201C

LEGEND

- NSW National Parks and Wildlife Service
- Other Mining Operations
- Mining Lease Boundary
- Approved Road Realignment (not yet constructed)
- Approved Haul Road
- Existing/Approved Development
- Open Cut Mining Area
- Out-of-pit Emplacement
- Surface Infrastructure Area
- Underground Longwall Layout
- Open Cut Optimisation Modification
- Indicative Study Area

Source: MCO (June 2015); NSW Dept of Industry (2016);
Office of Environment and Heritage NSW (2016)

MOOLARBEN COAL
MOOLARBEN COAL COMPLEX
Open Cut Optimisation Modification
Indicative Study Areas

Figure 1