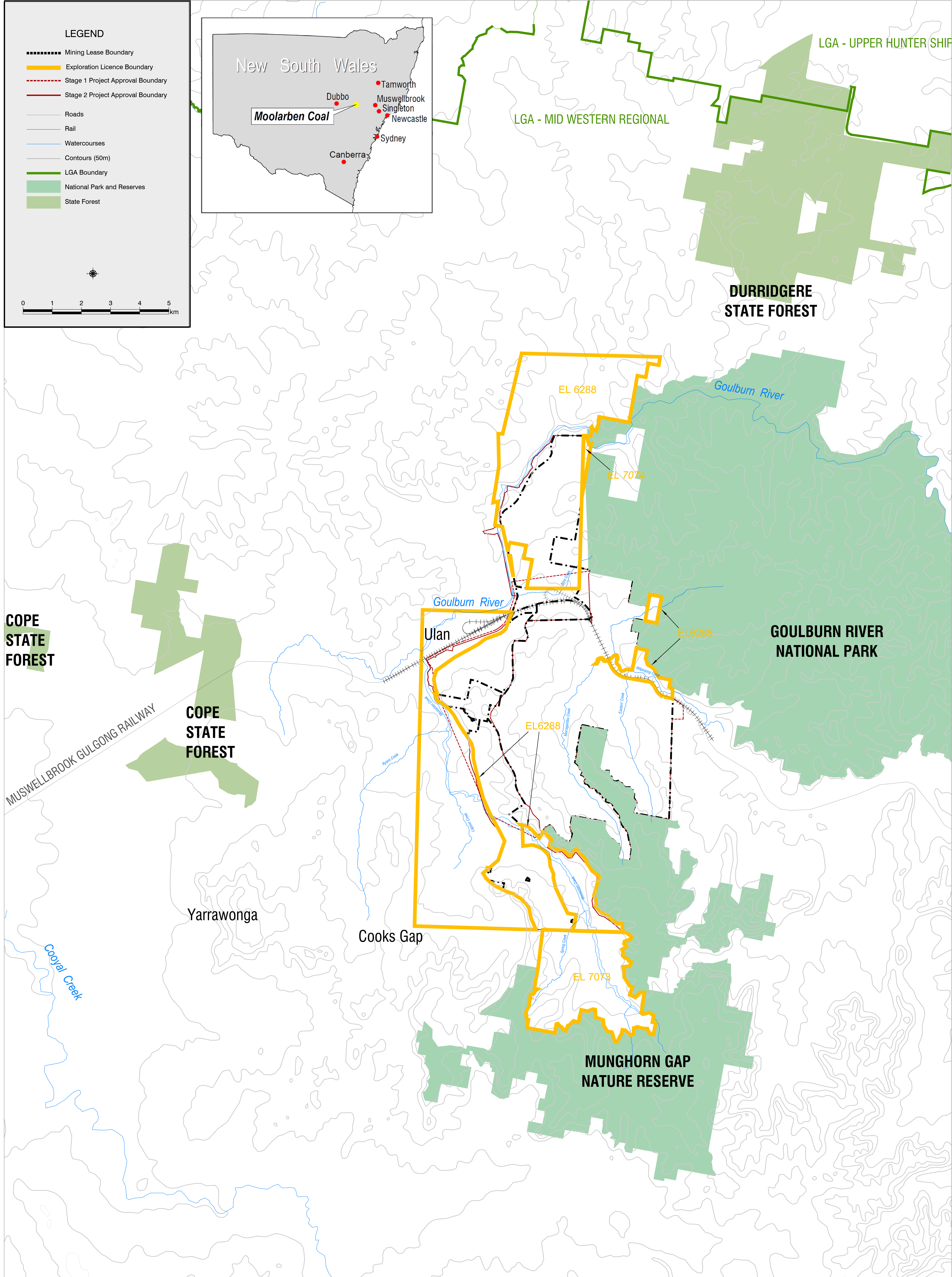
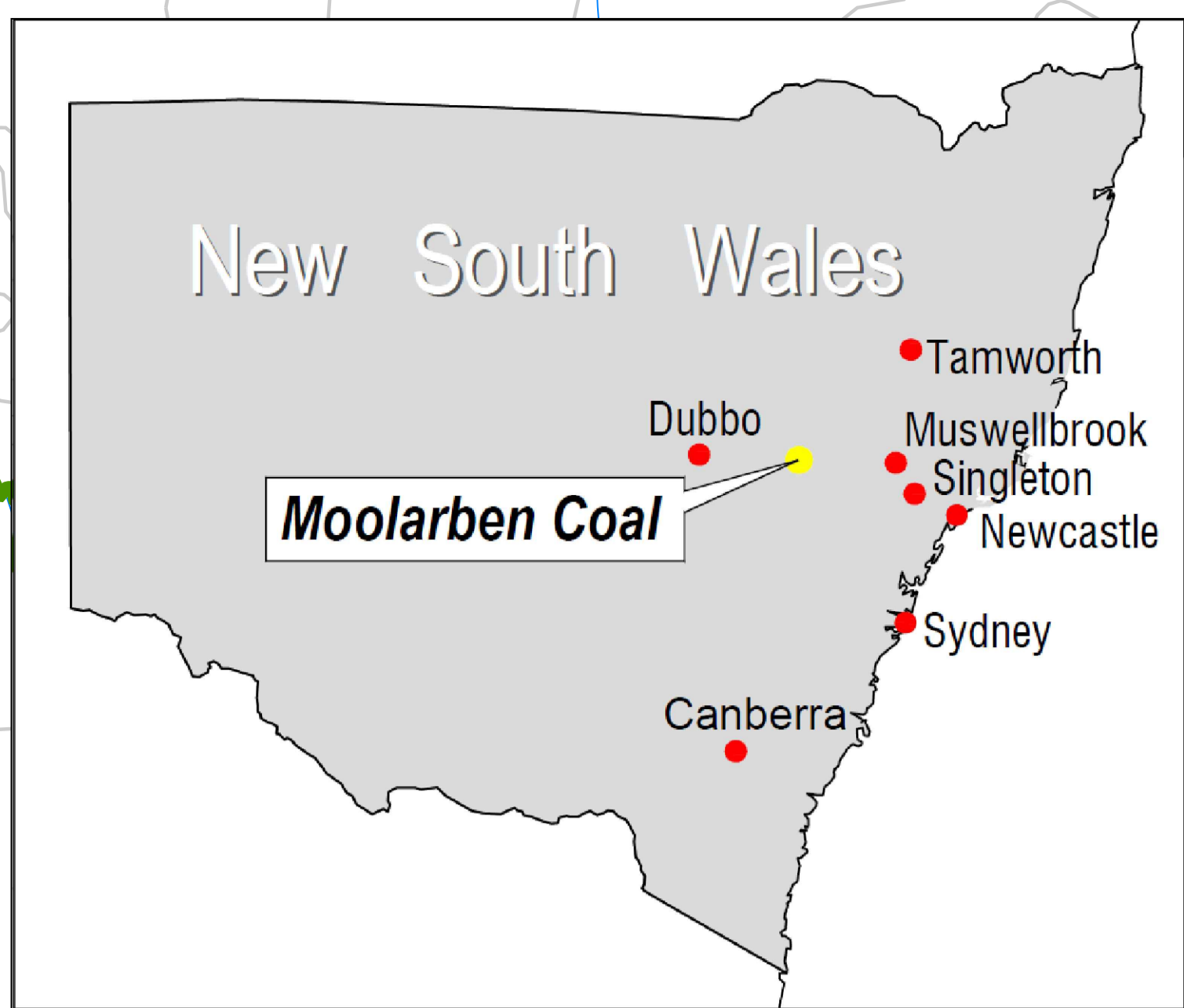


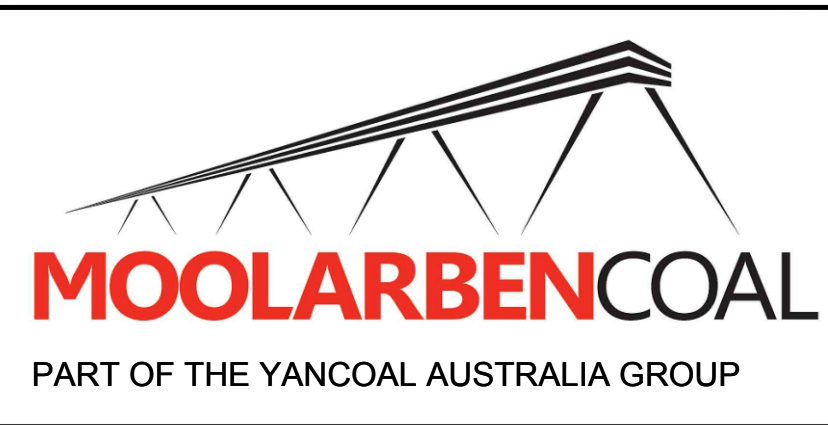
LEGEND

- Mining Lease Boundary
- Exploration Licence Boundary
- Stage 1 Project Approval Boundary
- Stage 2 Project Approval Boundary
- Roads
- Rail
- Watercourses
- Contours (50m)
- LGA Boundary
- National Park and Reserves
- State Forest



I, Steve Archinal, the General Manager, Moolarben Coal Operations, certify that the information on this plan is a true indication of the proposed development.

General Manager Date



4250 Ulan Road
Ulan NSW 2850
Phone: 02 6376 1500
Fax: 02 6376 1599

Moolarben Coal Complex Mining Operations Plan
Project Locality: State Wide Context
Map 1A

| | | | | | |
|------------|----------|-------|---------|-------------------|---------------|
| Date | Scale: | Drawn | Checked | Coordinate System | Drawing No. |
| 31/10/2016 | 1:12,000 | CH | GC | MGA Zone 55 | MOP-2016-001A |
| | | | | | Revision No. |
| | | | | | 0 |
| | | | | | Sheet Size |
| | | | | | A0 |