

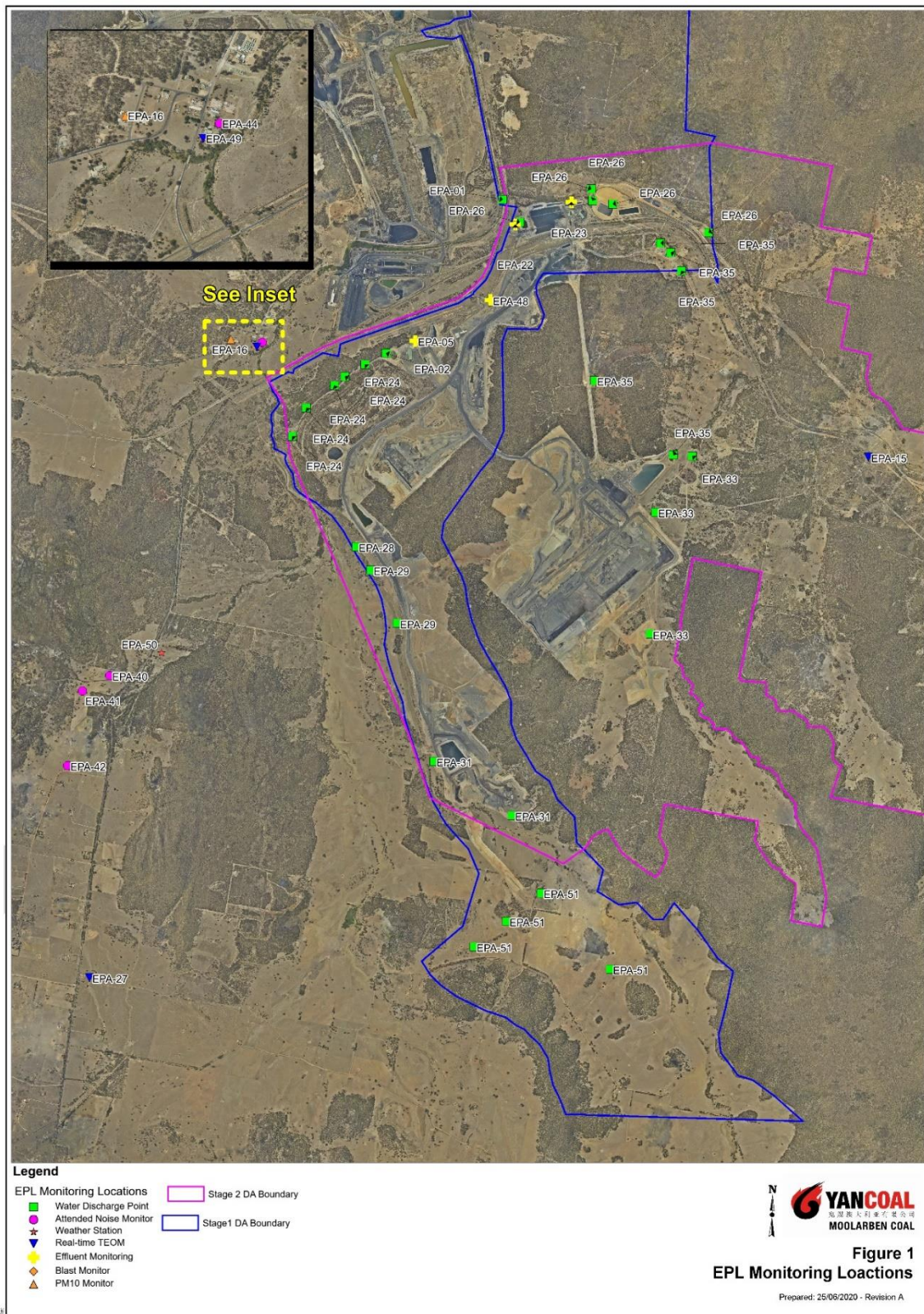


# Monthly Environmental Monitoring Report

For the Month Ending 31 October 2020

<b>Name of Operation</b>	Moolarben Coal Complex
<b>Name of License Holder</b>	Moolarben Coal Operations Pty Ltd
<b>Premises</b>	Moolarben Coal Mine 12 Ulan-Wollar Rd, Ulan NSW 2850
<b>Environmental Protection Licence Number</b>	12932
<b>EPL Link</b>	<a href="http://www.epa.nsw.gov.au/prpoeoapp/ViewPOEOLicence.aspx?DOCID=75423&amp;SYSUID=1&amp;LICID=12932">http://www.epa.nsw.gov.au/prpoeoapp/ViewPOEOLicence.aspx?DOCID=75423&amp;SYSUID=1&amp;LICID=12932</a>
<b>Premises</b>	Moolarben Coal Mine
<b>Reporting Period</b>	1 October 2020 to 31 October 2020
<b>Date last sampled data obtained</b>	17 November 2020
<b>Publication Date</b>	24 November 2020
<b>Version</b>	1
<b>Author</b>	L. Martin
<b>Approver</b>	T. Cini

### EPL 12932 MCO Environmental Monitoring Network



**Concentration Monitoring Summary**

**Air Quality Monitoring**

EPL ID	Location	Pollutant	Unit of Measure	EPL Monitoring Frequency	No. of Samples collected and analysed	12 mth rolling average			Annual 100%ile concentration limit	Exceedance (Yes/No)
						Min Value	Mean Value	Max Value		
15	TEOM 6	PM10	µg/m <sup>3</sup>	Continuous	98%	17.5	18.3	18.6	25	No
16	PM01	PM10	µg/m <sup>3</sup>	Every 6 days	5	11.1	12.2	12.8	25	No
N/A	PM02	PM10	µg/m <sup>3</sup>	Every 6 days	5	11.5	12.3	12.8	25	No
17	TEOM 1	PM10	µg/m <sup>3</sup>	Continuous	98.4%	16.0	16.7	17.0	25	No
27	TEOM 7	PM10	µg/m <sup>3</sup>	Continuous	96.4%	11.4	11.8	12.2	25	No
27	TEOM 7	PM2.5	µg/m <sup>3</sup>	Continuous	96.4%	5.3	5.4	5.5	8	No
N/A	TEOM 4	PM10	µg/m <sup>3</sup>	Continuous	97.4%	14.9	15.6	16.0	25	No

EPL ID	Location	Pollutant	Unit of Measure	EPL Monitoring Frequency	No. of Samples collected and analysed	Min Value	Mean Value	Max Value	100%ile concentration limit	Exceedance (Yes/No)
15	TEOM 6	PM10	µg/m <sup>3</sup>	Continuous (24 Hr Average)	98%	4	17.7	44.6	50	No
16	PM01	PM10	µg/m <sup>3</sup>	Every 6 days	5	6	13.2	24	50	No
N/A	PM02	PM10	µg/m <sup>3</sup>	N/A	5	4	17	28	50	No
17	TEOM 1	PM10	µg/m <sup>3</sup>	Continuous (24 Hr Average)	98.4%	4	13.5	33.5	50	No
27	TEOM 7	PM10	µg/m <sup>3</sup>	Continuous (24 Hr Average)	96.4%	1.3	10.5	23.9	50	No
27	TEOM 7	PM2.5	µg/m <sup>3</sup>	Continuous (24 Hr Average)	96.4%	0.4	5.4	12.7	25	No
N/A	TEOM 4	PM10	µg/m <sup>3</sup>	N/A (24 Hr Average)	97.4%	4.2	13.8	31.3	50	No



**Surface Water Quality Monitoring**

EPL ID	Location	Pollutant	Unit of Measure	No. of Samples collected and analysed	Date Sampled	Results
N/A	SW01	Conductivity	µS/cm	1	13/10/2020	729
		pH	pH	1	13/10/2020	7.7
		Total Suspended Solids	mg/L	1	13/10/2020	<5
N/A	SW02	Conductivity	µS/cm	1	13/10/2020	733
		pH	pH	1	13/10/2020	8.0
		Total Suspended Solids	mg/L	1	13/10/2020	<5
N/A	SW04	Conductivity	µS/cm	0	13/10/2020	No Flow
		pH	pH	0	13/10/2020	No Flow
		Total Suspended Solids	mg/L	0	13/10/2020	No Flow
N/A	SW05	Conductivity	µS/cm	1	13/10/2020	790
		pH	pH	1	13/10/2020	6.9
		Total Suspended Solids	mg/L	1	13/10/2020	<5
N/A	SW07	Conductivity	µS/cm	0	13/10/2020	No Flow
		pH	pH	0	13/10/2020	No Flow
		Total Suspended Solids	mg/L	0	13/10/2020	No Flow
N/A	SW08	Conductivity	µS/cm	1	13/10/2020	3320
		pH	pH	1	13/10/2020	6.0
		Total Suspended Solids	mg/L	1	13/10/2020	6
N/A	SW09	Conductivity	µS/cm	1	13/10/2020	4210
		pH	pH	1	13/10/2020	6.6
		Total Suspended Solids	mg/L	1	13/10/2020	15
N/A	SW12	Conductivity	µS/cm	1	13/10/2020	321
		pH	pH	1	13/10/2020	6.8
		Total Suspended Solids	mg/L	1	13/10/2020	<5
N/A	SW15	Conductivity	µS/cm	1	13/10/2020	205
		pH	pH	1	13/10/2020	6.4
		Total Suspended Solids	mg/L	1	13/10/2020	18
N/A	SW16	Conductivity	µS/cm	1	13/10/2020	223
		pH	pH	1	13/10/2020	6.7

---

**MONTHLY ENVIRONMENTAL MONITORING REPORT**For the Month Ending 31 October 2020

---

EPL ID	Location	Pollutant	Unit of Measure	No. of Samples collected and analysed	Date Sampled	Results
		Total Suspended Solids	mg/L	1	13/10/2020	<5
N/A	SW17	Conductivity	µS/cm	0	13/10/2020	No Flow
		pH	pH	0	13/10/2020	No Flow
		Total Suspended Solids	mg/L	0	13/10/2020	No Flow
N/A	SW18	Conductivity	µS/cm	0	13/10/2020	No Flow
		pH	pH	0	13/10/2020	No Flow
		Total Suspended Solids	mg/L	0	13/10/2020	No Flow

---

**MONTHLY ENVIRONMENTAL MONITORING REPORT**For the Month Ending 31 October 2020

---

**Blasting**

EPL ID	Location	Pollutant	Unit of Measure	Frequency	No. of Blasts during the reporting period	Min Value	Mean Value	Max Value	Limits dBL	Exceedance (Yes/No)
49	BM1 Ulan School	Blast Overpressure	dBL	Every Blast	16	81.3	93.5	103.9	115 (95% of Blasts) 120 (100% of Blasts)	No
		Ground Vibration	mm/s	Every Blast		0.07	0.14	0.21	5mm/s (95% of Blasts) 10mm/s (100% of Blasts)	No
N/A	BM5 Ridge Rd	Blast Overpressure	dBL	Every Blast	16	85.5	96.9	104.2	115 (95% of Blasts) 120 (100% of Blasts)	No
		Ground Vibration	mm/s	Every Blast		0.07	0.12	0.19	5mm/s (95% of Blasts) 10mm/s (100% of Blasts)	No
N/A	BM8 Moolarben Rd	Blast Overpressure	dBL	Every Blast	16	70.0	94.0	103.7	115 (95% of Blasts) 120 (100% of Blasts)	No
		Ground Vibration	mm/s	Every Blast		0.04	0.07	0.13	5mm/s (95% of Blasts) 10mm/s (100% of Blasts)	No

**MONTHLY ENVIRONMENTAL MONITORING REPORT**

For the Month Ending 31 October 2020

**Noise**

EPL ID	Location	Site ID	Monitoring Type	Frequency	Measured Level1,2,3 LA1,1minutedB (15min)	Measured Level1,2,3 LAeqdB (1min)	Noise Criteria4	Monitoring Completed during the period	Exceedance (Yes/No) <sup>5</sup>
44	Ulan Public School	NA1	Compliance - Attended	Monthly	NA	IA	Daytime (07:00 – 18:00) LAeq,15minute: 35 dB	Yes	No
N/A	Cope Road (Receiver 258)	NA11	Management - Attended	Annually	-	-	-	No	-
N/A	Lagoons Road	NA2	Validation - Attended	Annually	-	-	-	No	-
42	Winchester Crescent	NA12	Compliance/Validation - Attended	Quarterly	35	29	Night time (22:00 – 07:00) LAeq,15minute: 35 dB LA1,1minute: 45 dB	Yes	No
N/A	Upper Ridge Road (Receiver 176)	NA3	Validation - Attended	Annually	-	-	-	No	-
40, 41	Lower Ridge Road	NA6	Compliance -Attended	Monthly	30	26	Night time (22:00 – 07:00) LAeq,15minute: 37 dB LA1,1minute: 45 dB	Yes	No
N/A	Moolarben Road (Receiver 28)	NA10	Validation - Attended	Annually	-	-	-	No	-
46	Goulburn River National Park	GRNP	Compliance -Attended	Quarterly	-	-	All periods LAeq,15minute: 50 dB	No	-
46	Munghorn Gap Nature Reserve	MGNR	Compliance -Attended	Quarterly	-	-	All periods LAeq,15minute: 50 dB	No	-

1. NA indicates meteorological conditions during the measurement did not correspond with any modelled meteorological conditions, and were not applicable for comparison
2. IA is Inaudible. When site only noise is noted as IA, there was no noise from the source of interest audible at the monitoring location
3. Site-only noise levels attributed to MCO, including modifying factors where applicable
4. As detailed in the EPL, noise emission limits apply under all meteorological conditions except:
  - Wind speeds greater than 3 m/s at 10 metres above ground level; or



---

**MONTHLY ENVIRONMENTAL MONITORING REPORT**

For the Month Ending 31 October 2020

---

- Stability class F temperature inversion conditions, and wind speeds greater than 2 m/s at 10 metres above ground level; or
  - Stability class G temperature inversions
5. NA in last column means atmospheric conditions outside those specified in EPL, therefore criterion was not applicable

**Effluent Discharge Points**

EPL ID	Pollutant	Unit of Measure	No. of samples required by Licence	No. of Samples collected and analysed	Date Sampled	Result
5	BOD	mg/L	Quarterly	0		
	Nitrogen (total)	mg/L	Quarterly	0		
	Oil and Grease	mg/L	Quarterly	0		
	pH	pH	Quarterly	0		
	Phosphorus (total)	mg/L	Quarterly	0		
	Total Suspended Solids	mg/L	Quarterly	0		
22	BOD	mg/L	Quarterly	0		
	Nitrogen (total)	mg/L	Quarterly	0		
	Oil and Grease	mg/L	Quarterly	0		
	pH	pH	Quarterly	0		
	Phosphorus (total)	mg/L	Quarterly	0		
	Total Suspended Solids	mg/L	Quarterly	0		
23	BOD	mg/L	Quarterly	0		
	Nitrogen (total)	mg/L	Quarterly	0		
	Oil and Grease	mg/L	Quarterly	0		
	pH	pH	Quarterly	0		
	Phosphorus (total)	mg/L	Quarterly	0		
	Total Suspended Solids	mg/L	Quarterly	0		
48	BOD	mg/L	Quarterly	0		
	Nitrogen (total)	mg/L	Quarterly	0		
	Oil and Grease	mg/L	Quarterly	0		
	pH	pH	Quarterly	0		
	Phosphorus (total)	mg/L	Quarterly	0		
	Total Suspended Solids	mg/L	Quarterly	0		

**MONTHLY ENVIRONMENTAL MONITORING REPORT**

For the Month Ending 31 October 2020

**Discharge Points**

EPL ID	Pollutant	Unit of Measure	No. of samples required by Licence	No. of Samples collected and analysed	Min Value	Mean Value	Max Value	100%ile concentration limit	Exceedance (Yes/No)
1	Conductivity	µS/cm	Continuous during discharge	Continuous during discharge	208	213	222	685	No
	Oil and Grease	mg/L	Weekly during discharge	2	<2	<2	<2	10	No
	pH	pH	Continuous during discharge	Continuous during discharge	6.7	6.8	7.1	6.5-8.5	No
	Total Suspended Solids	mg/L	Weekly during discharge	2	<1	<1	<1	50	No
	Turbidity	NTU	Continuous during discharge	Continuous during discharge	0	0.2	3	25	No
	Discharge Volume	Megalitres per day	Continuous during discharge	Continuous during discharge	4.7	8.3	9.9	10	No
2	Conductivity	µS/cm	Continuous during discharge	No licensed discharges during the period				685	NA
	Oil and Grease	mg/L	Daily during discharge					10	NA
	pH	pH	Continuous during discharge					6.5-8.5	NA
	Total Suspended Solids	mg/L	Daily during discharge					50	NA
	Turbidity	NTU	Continuous during discharge					25	NA
	Discharge Volume	Megalitres per day	Continuous during discharge						NA
24	Oil and Grease	mg/L	Daily during discharge	No licensed discharges during the period					NA
	pH	pH	Daily during discharge					6.5-8.5	NA
	Total Suspended Solids	mg/L	Daily during discharge					50	NA
	Turbidity	NTU	Daily during discharge					25	NA
26	Oil and Grease	mg/L	Daily during discharge	No licensed discharges during the period					NA
	pH	pH	Daily during discharge					6.5-8.5	NA
	Total Suspended Solids	mg/L	Daily during discharge					50	NA
	Turbidity	NTU	Daily during discharge					25	NA

**MONTHLY ENVIRONMENTAL MONITORING REPORT**

For the Month Ending 31 October 2020

EPL ID	Pollutant	Unit of Measure	No. of samples required by Licence	No. of Samples collected and analysed	Min Value	Mean Value	Max Value	100%ile concentration limit	Exceedance (Yes/No)
28	Conductivity	µS/cm	Continuous during discharge	No licensed discharges during the period				685	NA
	Oil and Grease	mg/L	Daily during discharge					10	NA
	pH	pH	Continuous during discharge					6.5-8.5	NA
	Total Suspended Solids	mg/L	Daily during discharge					50	NA
	Turbidity	NTU	Continuous during discharge					25	NA
	Discharge Volume	Kilolitres per day	Continuous during discharge						NA
29	Oil and Grease	mg/L	Daily during discharge	No licensed discharges during the period					NA
	pH	pH	Daily during discharge					6.5-8.5	NA
	Total Suspended Solids	mg/L	Daily during discharge					50	NA
	Turbidity	NTU	Daily during discharge					25	NA
31	Oil and Grease	mg/L	Daily during discharge	No licensed discharges during the period					NA
	pH	pH	Daily during discharge					6.5-8.5	NA
	Total Suspended Solids	mg/L	Daily during discharge					50	NA
	Turbidity	NTU	Daily during discharge					25	NA
35	Oil and Grease	mg/L	Daily during discharge	No licensed discharges during the period					NA
	pH	pH	Daily during discharge					6.5-8.5	NA
	Total Suspended Solids	mg/L	Daily during discharge					50	NA
	Turbidity	NTU	Daily during discharge					25	NA
51	Oil and Grease	mg/L	Daily during discharge	No licensed discharges during the period					NA
	pH	pH	Daily during discharge					6.5-8.5	NA
	Total Suspended Solids	mg/L	Daily during discharge					50	NA
	Turbidity	NTU	Daily during discharge					25	NA