

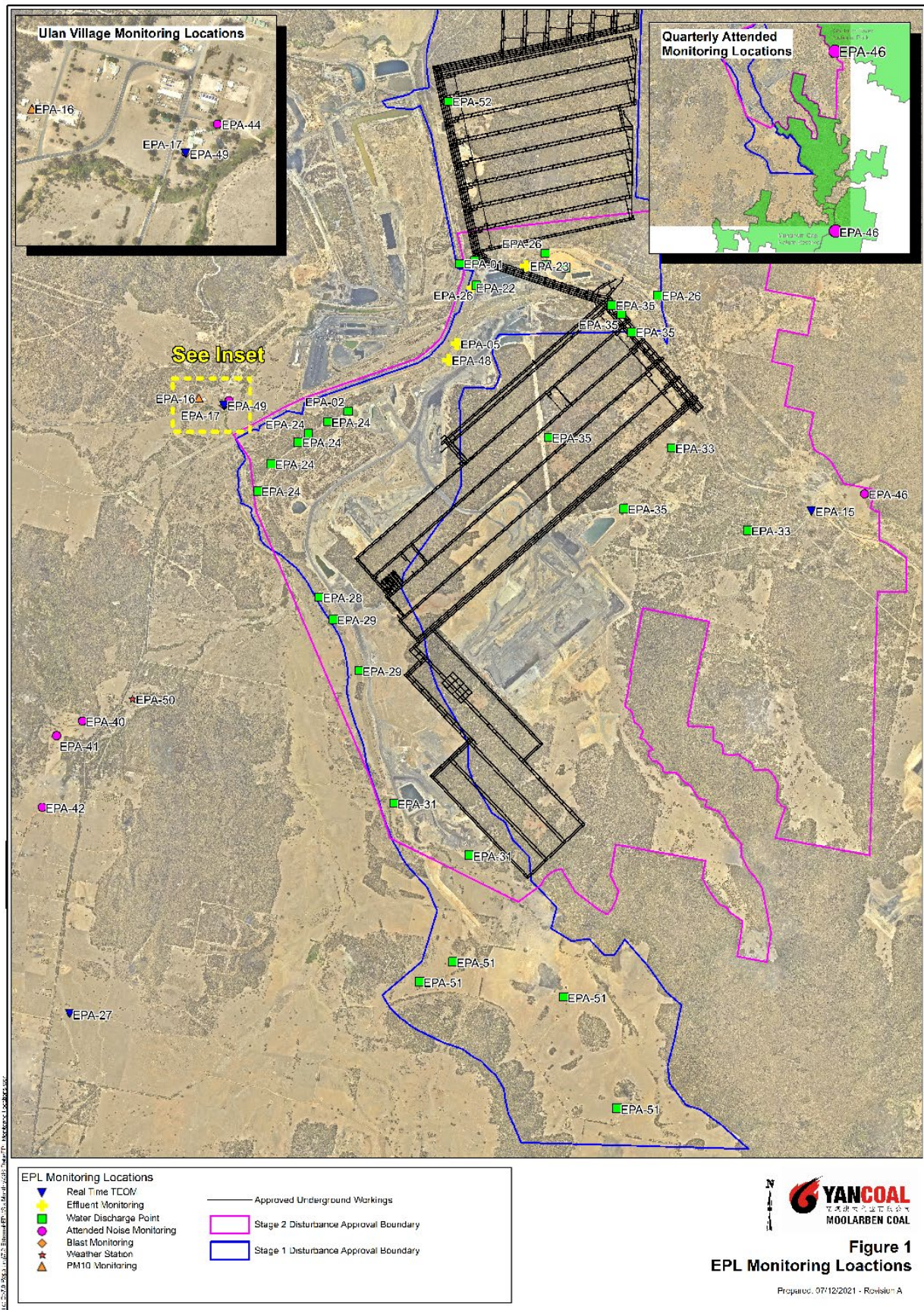


# Monthly Environmental Monitoring Report

For the Month Ending 28 February 2022

<b>Name of Operation</b>	Moolarben Coal Complex
<b>Name of License Holder</b>	Moolarben Coal Operations Pty Ltd
<b>Premises</b>	Moolarben Coal Mine 12 Ulan-Wollar Rd, Ulan NSW 2850
<b>Environmental Protection Licence Number</b>	12932
<b>EPL Link</b>	<a href="https://apps.epa.nsw.gov.au/prpoeoapp/ViewPOEOLicence.aspx?DOCID=228352&amp;SYSUID=1&amp;LICID=12932">https://apps.epa.nsw.gov.au/prpoeoapp/ViewPOEOLicence.aspx?DOCID=228352&amp;SYSUID=1&amp;LICID=12932</a>
<b>Premises</b>	Moolarben Coal Mine
<b>Reporting Period</b>	1 February 2022 to 28 February 2022
<b>Date last sampled data obtained</b>	22 March 2022
<b>Publication Date</b>	28 March 2022
<b>Version</b>	1
<b>Author</b>	M. Yeatman
<b>Approver</b>	R. Shanks

### EPL 12932 MCO Environmental Monitoring Network



**Concentration Monitoring Summary**

**Air Quality Monitoring**

EPL ID	Location	Pollutant	Unit of Measure	EPL Monitoring Frequency	No. of Samples collected and analysed annually	12 mth rolling average			Annual concentration limit	Exceedance (Yes/No)
						Min Value	Mean Value	Max Value		
16	PM01	PM10	µg/m <sup>3</sup>	Every 6 days	4	7.1	7.2	7.2	25	No
N/A	PM02	PM10	µg/m <sup>3</sup>	N/A	4	7.8	8.0	8.1	25	No
15	TEOM 6	PM10	µg/m <sup>3</sup>	Continuous	100%	11.7	11.7	11.8	25	No
17	TEOM 1	PM10	µg/m <sup>3</sup>	Continuous	93.2%	12.2	12.3	12.4	25	No
27	TEOM 7	PM10	µg/m <sup>3</sup>	Continuous	94.9%	8.2	8.3	8.5	25	No
27	TEOM 7	PM2.5	µg/m <sup>3</sup>	Continuous	94.9%	4.4	4.4	4.4	8	No
N/A	TEOM 4	PM10	µg/m <sup>3</sup>	N/A	96.6%	11.4	11.6	11.7	25	No

EPL ID	Location	Pollutant	Unit of Measure	EPL Monitoring Frequency	No. of Samples collected and analysed	Min Value	Mean Value	Max Value	24 Hr concentration limit	Exceedance (Yes/No)
16	PM01	PM10	µg/m <sup>3</sup>	Every 6 days	4	7.7	10.7	17.8	50	No
N/A	PM02	PM10	µg/m <sup>3</sup>	N/A	4	5.7	11.5	20.6	50	No
15	TEOM 6	PM10	µg/m <sup>3</sup>	Continuous (24 Hr Average)	100%	5.6	12.1	26.7	50	No
17	TEOM 1	PM10	µg/m <sup>3</sup>	Continuous (24 Hr Average)	100%	8.1	15.2	25.1	50	No
27	TEOM 7	PM10	µg/m <sup>3</sup>	Continuous (24 Hr Average)	100%	3.9	9.3	16.8	50	No
27	TEOM 7	PM2.5	µg/m <sup>3</sup>	Continuous (24 Hr Average)	100%	1.3	4.3	6.8	25	No
N/A	TEOM 4	PM10	µg/m <sup>3</sup>	N/A (24 Hr Average)	92.9%	7.2	13.6	24.3	50	No

**Surface Water Quality Monitoring**

EPL ID	Location	Pollutant	Unit of Measure	No. of Samples collected and analysed	Date Sampled	Results
N/A	SW01	Conductivity	µS/cm	1	08/02/2022	609
		pH	pH	1	08/02/2022	8.0
		Total Suspended Solids	mg/L	1	08/02/2022	5
N/A	SW02	Conductivity	µS/cm	1	08/02/2022	606
		pH	pH	1	08/02/2022	8.0
		Total Suspended Solids	mg/L	1	08/02/2022	5
N/A	SW04	Conductivity	µS/cm	0	08/02/2022	Not Flowing
		pH	pH	0	08/02/2022	Not Flowing
		Total Suspended Solids	mg/L	0	08/02/2022	Not Flowing
N/A	SW05	Conductivity	µS/cm	1	08/02/2022	787
		pH	pH	1	08/02/2022	7.6
		Total Suspended Solids	mg/L	1	08/02/2022	5
N/A	SW07	Conductivity	µS/cm	1	08/02/2022	1540
		pH	pH	1	08/02/2022	7.7
		Total Suspended Solids	mg/L	1	08/02/2022	8
N/A	SW08	Conductivity	µS/cm	1	08/02/2022	1980
		pH	pH	1	08/02/2022	7.6
		Total Suspended Solids	mg/L	1	08/02/2022	5
N/A	SW09	Conductivity	µS/cm	1	08/02/2022	1510
		pH	pH	1	08/02/2022	7.7
		Total Suspended Solids	mg/L	1	08/02/2022	5
N/A	SW12	Conductivity	µS/cm	1	08/02/2022	482
		pH	pH	1	08/02/2022	7.3
		Total Suspended Solids	mg/L	1	08/02/2022	6
N/A	SW15	Conductivity	µS/cm	0	08/02/2022	Not Flowing
		pH	pH	0	08/02/2022	Not Flowing
		Total Suspended Solids	mg/L	0	08/02/2022	Not Flowing
N/A	SW16	Conductivity	µS/cm	0	08/02/2022	Not Flowing
		pH	pH	0	08/02/2022	Not Flowing

---

**MONTHLY ENVIRONMENTAL MONITORING REPORT**For the Month Ending 28 February 2022

---

EPL ID	Location	Pollutant	Unit of Measure	No. of Samples collected and analysed	Date Sampled	Results
		Total Suspended Solids	mg/L	0	08/02/2022	Not Flowing
N/A	SW17	Conductivity	µS/cm	0	08/02/2022	Dry
		pH	pH	0	08/02/2022	Dry
		Total Suspended Solids	mg/L	0	08/02/2022	Dry
N/A	SW18	Conductivity	µS/cm	0	08/02/2022	Not Flowing
		pH	pH	0	08/02/2022	Not Flowing
		Total Suspended Solids	mg/L	0	08/02/2022	Not Flowing

**Blasting**

	Location	Pollutant	Unit of Measure	Frequency	No. of Blasts during the reporting period	Results			Limits dBL	Exceedance (Yes/No)
						Min Value	Mean Value	Max Value		
49	BM1 Ulan School	Blast Overpressure	dBL	Every Blast	11	84.8	94.8	99.5	115 (95% of Blasts) 120 (100% of Blasts)	No
		Ground Vibration	mm/s	Every Blast		0.06	0.1	0.3	5mm/s (95% of Blasts) 10mm/s (100% of Blasts)	No
N/A	BM5 Ridge Rd	Blast Overpressure	dBL	Every Blast	11	85.1	96.6	105.2	115 (95% of Blasts) 120 (100% of Blasts)	No
		Ground Vibration	mm/s	Every Blast		0.02	0.2	0.4	5mm/s (95% of Blasts) 10mm/s (100% of Blasts)	No
N/A	BM8 Moolarben Rd	Blast Overpressure	dBL	Every Blast	11	81.1	94.9	102.7	115 (95% of Blasts) 120 (100% of Blasts)	No
		Ground Vibration	mm/s	Every Blast		0.01	0.1	0.6	5mm/s (95% of Blasts) 10mm/s (100% of Blasts)	No

**MONTHLY ENVIRONMENTAL MONITORING REPORT**

For the Month Ending 28 February 2022

**Noise**

EPL ID	Location	Site ID	Monitoring Type	Frequency	Measured Level <sup>1,2,3,6</sup> LAeq dB (15min)	Measured Level <sup>1,2,3,6</sup> LA1,1dB (1min)	Noise Criteria <sup>4</sup>	Monitoring Completed during the period	Exceedance (Yes/No) <sup>5</sup>
44	Ulan Public School	NA1	Compliance - Attended	Monthly	IA	IA	Daytime (07:00 – 18:00) LAeq,15minute: 35 dB	Yes	NA
N/A	Cope Road (Receiver 258)	NA11	Management - Attended	Quarterly	IA	IA	-	Yes	NA
N/A	Lagoons Road	NA2	Validation - Attended	Annually	-	-	-	No	-
42	Winchester Crescent	NA12	Compliance/Validation - Attended	Monthly	IA	IA	Night time (22:00 – 07:00) LAeq,15minute: 35 dB LA1,1minute: 45 dB	Yes	NA
N/A	Upper Ridge Road (Receiver 176)	NA3	Validation - Attended	Annually	-	-	-	No	-
40, 41	Lower Ridge Road	NA6	Compliance -Attended	Monthly	IA	IA	Night time (22:00 – 07:00) LAeq,15minute: 37 dB LA1,1minute: 45 dB	Yes	NA
N/A	Moolarben Road (Receiver 28)	NA10	Validation - Attended	Annually	-	-	-	No	-
46	Goulburn River National Park	GRNP	Compliance -Attended	Annually	-	-	All periods LAeq,15minute: 50 dB	No	-
46	Munghorn Gap Nature Reserve	MGNR	Compliance -Attended	Annually	-	-	All periods LAeq,15minute: 50 dB	No	-

1. NA indicates meteorological conditions during the measurement did not correspond with any modelled meteorological conditions, and were not applicable for comparison
2. IA is Inaudible. When site only noise is noted as IA, there was no noise from the source of interest audible at the monitoring location
3. Site-only noise levels attributed to MCO, including modifying factors where applicable
4. As detailed in the EPL, noise emission limits apply under all meteorological conditions except:
  - Wind speeds greater than 3 m/s at 10 metres above ground level; or
  - Stability class F temperature inversion conditions, and wind speeds greater than 2 m/s at 10 metres above ground level; or
  - Stability class G temperature inversions
5. NA in last column means atmospheric conditions outside those specified in EPL, therefore criterion was not applicable
6. NM in Not Measurable. When site noise is noted as NM, this means some noise was audible but could not be quantified.



**Effluent Discharge Points**

EPL ID	Pollutant	Unit of Measure	No. of samples required by Licence	No. of Samples collected and analysed	Date Sampled	Result
5	BOD	mg/L	Quarterly	1	09/02/2022	48
	Nitrogen (total)	mg/L	Quarterly	1	09/02/2022	87.4
	Oil and Grease	mg/L	Quarterly	1	09/02/2022	<5
	pH	pH	Quarterly	1	09/02/2022	8.0
	Phosphorus (total)	mg/L	Quarterly	1	09/02/2022	12.2
	Total Suspended Solids	mg/L	Quarterly	1	09/02/2022	28
22	BOD	mg/L	Quarterly	1	09/02/2022	28
	Nitrogen (total)	mg/L	Quarterly	1	09/02/2022	248
	Oil and Grease	mg/L	Quarterly	1	09/02/2022	<5
	pH	pH	Quarterly	1	09/02/2022	7.7
	Phosphorus (total)	mg/L	Quarterly	1	09/02/2022	29.1
	Total Suspended Solids	mg/L	Quarterly	1	09/02/2022	9
23	BOD	mg/L	Quarterly	1	09/02/2022	20
	Nitrogen (total)	mg/L	Quarterly	1	09/02/2022	5.1
	Oil and Grease	mg/L	Quarterly	1	09/02/2022	<5
	pH	pH	Quarterly	1	09/02/2022	7.3
	Phosphorus (total)	mg/L	Quarterly	1	09/02/2022	0.3
	Total Suspended Solids	mg/L	Quarterly	1	09/02/2022	40
48	BOD	mg/L	Quarterly	1	09/02/2022	69
	Nitrogen (total)	mg/L	Quarterly	1	09/02/2022	5.3
	Oil and Grease	mg/L	Quarterly	1	09/02/2022	<5
	pH	pH	Quarterly	1	09/02/2022	7.1
	Phosphorus (total)	mg/L	Quarterly	1	09/02/2022	0.4
	Total Suspended Solids	mg/L	Quarterly	1	09/02/2022	22

**MONTHLY ENVIRONMENTAL MONITORING REPORT**

For the Month Ending 28 February 2022

**Discharge Points**

EPL ID	Pollutant	Unit of Measure	No. of samples required by Licence	No. of Samples collected and analysed	Min Value	Mean Value	Max Value	100%ile concentration limit	Exceedance (Yes/No)
1	Conductivity	µS/cm	Continuous during discharge	Continuous during discharge	206	299.8	443	685	No
	Oil and Grease	mg/L	Weekly during discharge	4	<2	<2	<2	10	No
	pH	pH	Continuous during discharge	Continuous during discharge	7.1	7.3	7.5	6.5-8.5	No
	Total Suspended Solids	mg/L	Weekly during discharge	4	<1	<1	<1	50	No
	Turbidity	NTU	Continuous during discharge	Continuous during discharge	0	0.01	2	25	No
	Discharge Volume	Megalitres per day	Continuous during discharge	Continuous during discharge	4.3	6.6	9.0	15*	No
2	Conductivity	µS/cm	Continuous during discharge	No licensed discharges during the period				685	NA
	Oil and Grease	mg/L	Daily during discharge					10	NA
	pH	pH	Continuous during discharge					6.5-8.5	NA
	Total Suspended Solids	mg/L	Daily during discharge					50	NA
	Turbidity	NTU	Continuous during discharge					25	NA
	Discharge Volume	Megalitres per day	Continuous during discharge						NA
24	Oil and Grease	mg/L	Daily during discharge	No licensed discharges during the period					NA
	pH	pH	Daily during discharge					6.5-8.5	NA
	Total Suspended Solids	mg/L	Daily during discharge					50	NA
	Turbidity	NTU	Daily during discharge					25	NA
26	Oil and Grease	mg/L	Daily during discharge	No licensed discharges during the period					NA
	pH	pH	Daily during discharge					6.5-8.5	NA
	Total Suspended Solids	mg/L	Daily during discharge					50	NA
	Turbidity	NTU	Daily during discharge					25	NA

**MONTHLY ENVIRONMENTAL MONITORING REPORT**

For the Month Ending 28 February 2022

EPL ID	Pollutant	Unit of Measure	No. of samples required by Licence	No. of Samples collected and analysed	Min Value	Mean Value	Max Value	100%ile concentration limit	Exceedance (Yes/No)
28	Conductivity	µS/cm	Continuous during discharge	No licensed discharges during the period				685	NA
	Oil and Grease	mg/L	Daily during discharge					10	NA
	pH	pH	Continuous during discharge					6.5-8.5	NA
	Total Suspended Solids	mg/L	Daily during discharge					50	NA
	Turbidity	NTU	Continuous during discharge					25	NA
	Discharge Volume	Kilolitres per day	Continuous during discharge						NA
29	Oil and Grease	mg/L	Daily during discharge	No licensed discharges during the period					NA
	pH	pH	Daily during discharge					6.5-8.5	NA
	Total Suspended Solids	mg/L	Daily during discharge					50	NA
	Turbidity	NTU	Daily during discharge					25	NA
31	Oil and Grease	mg/L	Daily during discharge	No licensed discharges during the period					NA
	pH	pH	Daily during discharge					6.5-8.5	NA
	Total Suspended Solids	mg/L	Daily during discharge					50	NA
	Turbidity	NTU	Daily during discharge					25	NA
35	Oil and Grease	mg/L	Daily during discharge	No licensed discharges during the period					NA
	pH	pH	Daily during discharge					6.5-8.5	NA
	Total Suspended Solids	mg/L	Daily during discharge					50	NA
	Turbidity	NTU	Daily during discharge					25	NA
51	Oil and Grease	mg/L	Daily during discharge	No licensed discharges during the period					NA
	pH	pH	Daily during discharge					6.5-8.5	NA
	Total Suspended Solids	mg/L	Daily during discharge					50	NA
	Turbidity	NTU	Daily during discharge					25	NA

\*As per the SWMP V5 October 2020 as operations have commenced in UG4 the daily discharge volume limit has increased to 15 ML/d.